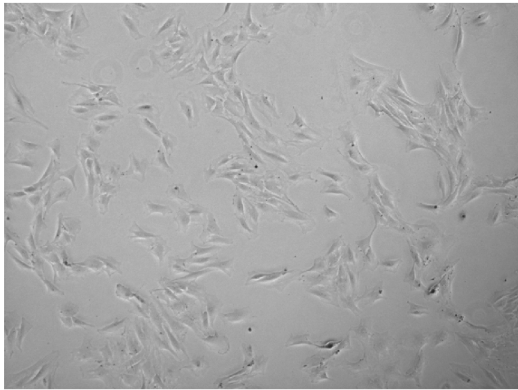


**Additional file 1.** Identification of nucleus pulposus (NP) cells. A: NP cells under a light microscope. NP cells exhibited short shuttle-like, round or polygon shapes. Magnification: 200x. B: Analysis of gene expression of NP cell specific markers (CAXII, Keratin-19, FOXF1 and PAX1).

**A**



**B**

