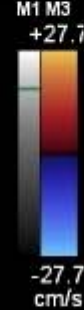


FR 6Hz 42°
P1

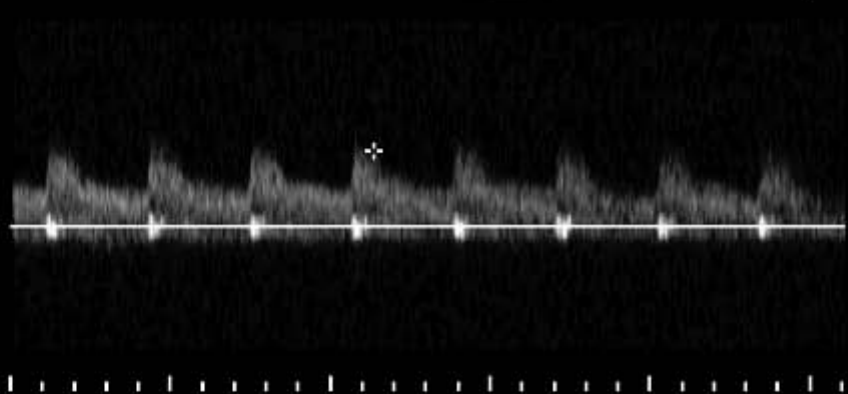
2D
46%
C 55
P Med.
Gen
CF
71%
1620Hz
WF 72Hz
Bassa



PW
36%
WF 60Hz
SV 1.5mm
M3
2.5MHz
7.5cm



❖ Vel 59.2 cm/s₁₀



- 160
-
- 80
-
- cm/s
-
- 80

6.6s