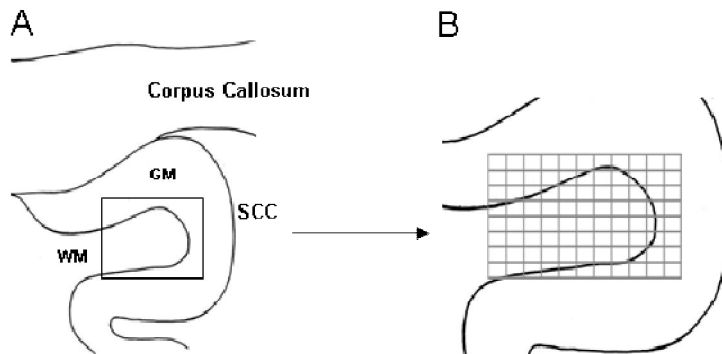




Supplemental Fig. 1. Sagittal diagram illustrating the level of the coronal sampling the subgenual cingulate cortex (shaded region A).

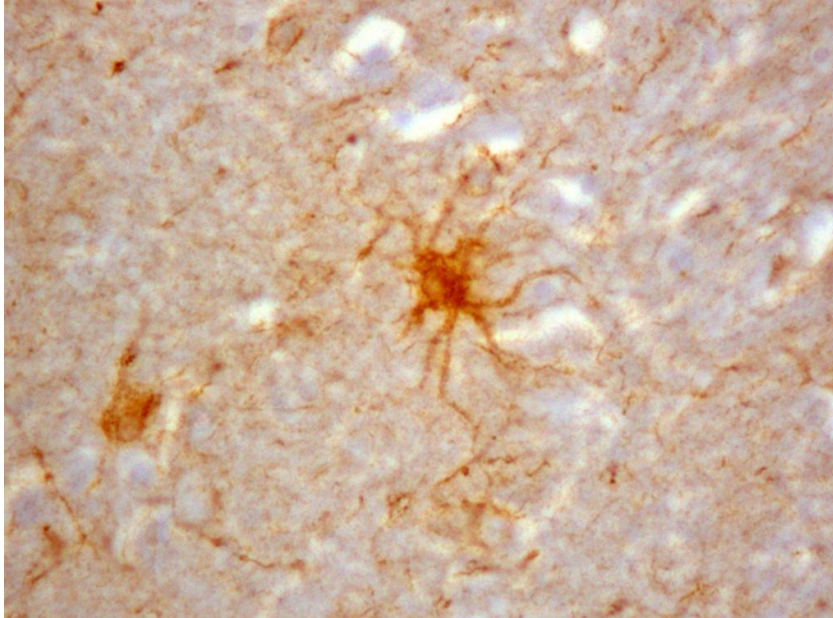


Supplemental Fig. 2. Illustration of grid mask for random counting of white matter regions. A). a region covering the region of the cortical white matter would be B). An 88-square grid mask was imposed over the region, was numbered and randomly selected for counting as described in text. Randomly selected squares overlapping cortical grey matter, as observed by the presence of haematoxylin-stained neurons, were not used and new squares were selected for cell counting up to a total of 10 (total area of $400,000\mu\text{m}^2$).

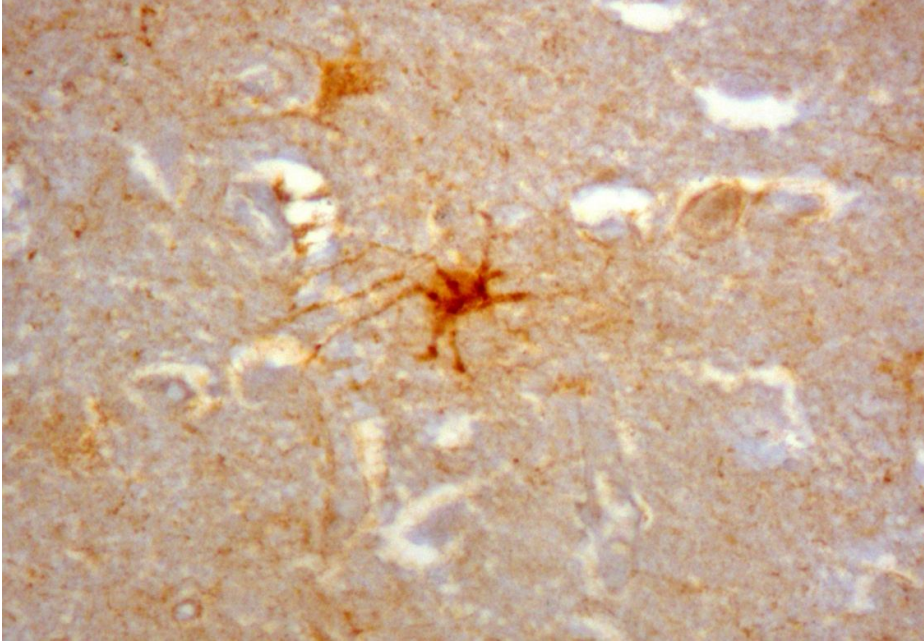
Case No.	Age/y	Sex	ICD10-Diagnosis	PM delay/h	Time in formalin/y	CoD
1	69	M	NPD	10	8	Acute bronchiolitis
2	45	F	NPD	23	12	Diffuse non-Hodgkin's lymphoma
3	64	F	NPD	31	8	Coronary thrombosis
4	75	M	NPD	42	8	Malignant neoplasm of bladder
5	56	M	NPD	5	8	Coronary thrombosis
6	68	M	NPD	66	13	Multiple myeloma
7	64	M	NPD	101	8	Congestive heart failure
8	76	M	NPD	NK	13	Pneumonia
9	48	M	NPD	25	8	Coronary thrombosis
10	61	F	NPD	48	8	Myocardial infarction
11	58	F	NPD	98	8	Chronic ischaemic heart disease
12	33	M	NPD	NK	12	Acute myocarditis
13	62	M	NPD	NK	13	Chronic ischaemic heart disease
14	70	M	NPD	34	8	Chronic ischaemic heart disease
15	77	F	NPD	29	13	Non-Hodgkin's lymphoma
16	82	F	NPD	30	12	Malignant neoplasm of breast
17	59	M	NPD	68	12	Pulmonary embolism
18	65	M	NPD	20	12	Septicaemia
19	82	F	NPD	77	12	Pneumonia
20	64	F	NPD	NK	9	Malignant neoplasm of breast
21	72	F	SZ	NK	6	Congestive heart failure
22	22	M	SZ	18	15	Intentional self-poisoning
23	80	F	SZ	50	6	Hepatic failure
24	80	F	SZ	75	9	Malignant neoplasm of colon
25	50	M	SZ	80	8	Pneumonia
26	50	F	SZ	40	9	Malignant neoplasm of lung
27	66	M	SZ	24	6	Myocardial infarction
28	50	F	SZ	NK	13	Hypothermia
29	34	M	SZ	NK	15	Pneumonia
30	66	M	SZ	NK	12	Chronic ischaemic heart disease
31	82	F	SZ	NK	18	NK
32	37	M	BPD	89	7	Multiple Injuries
33	79	M	BPD	51	22	Chronic ischaemic heart disease

34	49	M	BPD	91	29	Congestive heart failure
35	47	F	BPD	27	6	Intentional self-poisoning
36	64	F	BPD	12	26	Pneumonia
37	33	M	BPD	52	14	Suicide - explosive
38	55	F	BPD	28	28	Pulmonary embolism
39	63	F	BPD	58	14	Congestive heart failure
40	21	F	BPD	NK	15	Intentional self-poisoning
41	66	M	BPD	51	15	Myocardial infarction
42	58	M	BPD	NK	13	Pulmonary embolism
43	77	F	BPD	16	26	Congestive heart failure
44	77	F	BPD	36	31	Duodenal ulcer
45	63	M	BPD	100	17	Atherosclerosis
46	60	F	BPD	55	19	Congestive heart failure
47	64	F	BPD	42	23	Malignant neoplasm of breast
48	48	M	MDD	17	12	Suicide by carbon monoxide
49	41	F	MDD	28	15	Intentional self-poisoning
50	48	F	MDD	47	15	Suicide by jumping
51	52	M	MDD	53	7	Malignant neoplasm of oesophagus
52	60	F	MDD	NK	15	Pneumonia
53	54	M	MDD	7	13	Suicide by burning
54	45	F	MDD	66	12	Intentional self-poisoning
55	32	F	MDD	39	6	Intentional self-poisoning
56	68	F	MDD	NK	14	Pneumonia
57	70	F	MDD	48	15	Pneumonia
58	32	F	MDD	39	6	Sudden death, cause unknown
59	44	F	MDD	41	6	Asphyxiation
60	35	M	MDD	50	6	Asphyxiation
61	53	M	MDD	26	6	Intentional self-poisoning
62	37	F	MDD	17	13	Suicide by carbon monoxide
63	47	F	MDD	NK	14	Suicide by hanging
64	42	M	MDD	26	6	Asphyxiation
65	65	F	MDD	20	12	Intentional self-poisoning
66	18	F	MDD	98	7	Intentional self-poisoning
67	79	F	MDD	7	16	myocardial infarction

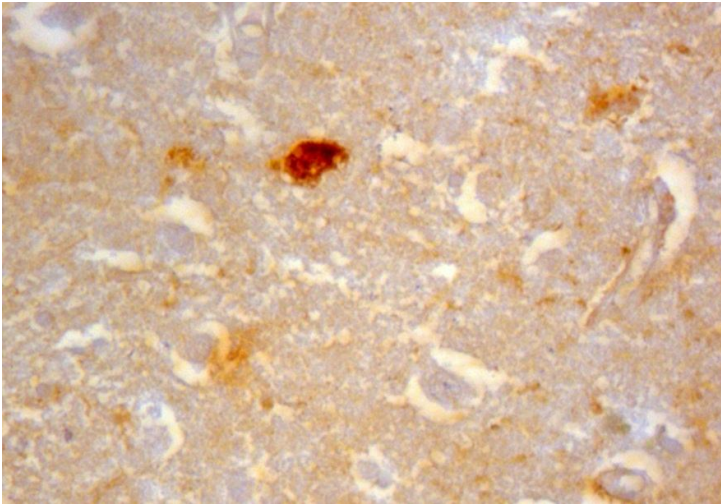
Supplementary Table. 1. Summary of clinical and histological information on the brains from the Corsellis collection.
Diagnostic codes from ICD-10. NPD-no psychiatric disorder, SZ-schizophrenia, BPD-bipolar disorder, MDD-major depressive disorder. NK-not known.



Supplementary online image 1. A GFAP-stained fibrillary astrocyte, centre, with a gemistocyte astrocyte to the left showing relative size of cells at x400 magnification.



Supplementary online image 2. A GFAP-stained fibrillary astrocyte at x400 magnification. The stained processes of the astrocyte can be clearly discerned.



Supplementary online image 3. A GFAP-stained gemistocytic astrocyte at x400 magnification. The staining of the body of the cell was often deeper than in fibrillary astrocytes.